



**Jones**  
FEED MILLS LTD.

**November 2022**

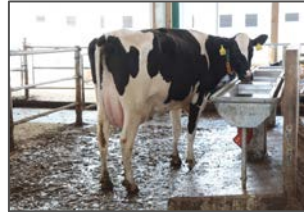
**Linwood | Heidelberg | Wroxeter**

**Order Desk: 519-698-2082 | Dispatch: 519-698-9928 | 1-800-265-8735 | Fax: 519-698-2719**

## The Importance of Water

*By Ken Wales, JFM Ruminant Sales Consultant*

Water quantity and quality is often overlooked when it comes to routine maintenance on the farm. Water is the most important nutrient on the farm. Poor water quality or availability can, and will, result in poor production and health.



Milk production, dry matter intake, environment and activity level all influence water consumption. The majority of cows' water intake comes directly from drinking water, though they do get a some from moisture present in feed. For every litre of milk produced, that cow needs to drink 3 litres of water.

Most cows do their drinking after milking. Water troughs and/or bowls should preferably be cleaned (emptied and scrubbed) on a daily basis, but a weekly basis is better than not at all. If the water looks unappetizing to you, you can't expect your cows to drink it.

*Continued on page 2*

## FUTURES

October 31, 2022

**Live Cattle**

(\$/CWT)

Dec	\$ 207.37
Feb	\$ 212.33
Apr	\$ 216.62
Jun	\$ 209.94

**Dressed Hogs**

(\$/CKG)

Dec	\$ 218.53
Feb	\$ 227.07
Apr	\$ 238.42
May	\$ 250.15

Canadian Dollar: \$ 1.36

Source: farms.com

## November Salt Sale

10% off all livestock salt products. Volume orders included. Sale ends November 30/22



## Jefo Dairynat Vitali-T



Dairy Producers – JFM has discount pricing on Vitali-T energy supplement for the Fall. Call 1-800-265-8735 or call your JFM Rep for pricing. Volume inquires welcome.

## Avian Influenza (AI) November Update

With the fall migration for many bird species underway, we have begun to see an increase of Bird Flu in Ontario as well as other regions within North America. Though we would hope the fall migration would bring us closer to the end of AI, it is important to understand that many birds winter in Canada (ie: Canada Geese), therefore not eliminating our risk. The most current information from OMAFRA is that AI will maintain a presence throughout the winter and spring and that we will rely on next summer's heat to again lower the incidence rate. Jones Feed Mills continues to take the necessary precautions to help reduce the spread of AI. Precautionary measures include, but are not restricted to, disinfecting all incoming supplier vehicles, disinfecting all feed delivery vehicles upon arrival at our customers farms and disinfecting all JFM sales and service vehicles when arriving at farms that house poultry. All personnel entering any Jones facilities must also use disinfecting foot mats to disinfect their feet before entering any JFM facility (including offices). JFM will continue to use these precautions until otherwise instructed.

**Lest We Forget**



**November 11**

## On the Calendar:

- Nov 3-13 Royal Winter Fair**
- Nov 16 – Artisanal Chicken Webinar** – Call for information
- Dec 6 - Jones Dairy Producer Meeting** - Linwood
- Jan 4-10 Grey Bruce Farmers Week** - Elmwood
- Jan 12-14 ON Cattle Feeders Convention** – London
- Feb 8-9/23 National Poultry Show** - London

## Jones Feed Mills Positions Available

- 1. Retail Customer Service** - Heidelberg/Part-Time
- 2. Mill Operators** – Linwood/Full-Time
- 3. DZ Truck Drivers** – Bag & Bulk Drivers required
- 4. Mill Supervisor** – Linwood/Full Time

*For more information or to apply, please contact:*  
Matt Hogan: [matt@jfm.ca](mailto:matt@jfm.ca) 519-698-2082

***Come Join the Jones Team!***

## **Water** – Continued from page 1

Other factors that can influence water intake include trough space, number of troughs and water taste or smell. If there are concerns over water intakes, a water test at the source the cow is drinking from may be needed. Test results come back showing the levels of various minerals and microorganisms, as well as an acceptable range for each. There are a few specifics to keep your eye on. High Iron (greater than 0.3ppm), sulfate (<1000ppm), and nitrates are a concern in water, just as they are in feed (levels over 20ppm is a concern). When microorganisms (fecal organisms, algae) are present in, improved sanitation protocols may have to be initiated. Remember, milk is 87% water. If intakes are limited, milk production will also be limited. Access to clean, plentiful water should be available to the whole herd to ensure every cow's production is optimized. And remember, water is the cheapest nutrient in the farm!

## **Jones Dairy Producer Meeting**



**December 6, 2022**

10:00AM – 3:30 PM

**Linwood Community Centre**

5279 Ament Line, Linwood, ON

**Hot Roast Beef Lunch - Rides Available**

**RSVP Dec 2/22 - 1-800-265-8735**



## **Speakers/Topics**

**Alanna Kmicikewycz**

Dairy Nutrition Specialist  
Provimi North America

**“Maximizing Production  
During High Commodity  
Prices”**

\*

**Tricia Dunn**

Dairy Services Lead & Sales  
Consultant  
Jones Feed Mills

**“On-Farm Strategies to  
Optimize Performance”**

\*

**Mark Gerber**

Account Manager – MI & ON  
Zinpro

**“Hoof Health - A  
Practical Approach”**



[www.jfm.ca](http://www.jfm.ca) | 1-800-265-8735

@Jones\_Feed Jones Feed Mill Ltd