

Linwood | Heidelberg | Wroxeter | Mitchell
 Order Desk: 519-698-2082 | Dispatch: 519-698-9928 | 1-800-265-8735 | Fax: 519-698-2719

Bert Pletsch - 50 Years of Service at Jones Feed Mills!

Last month, Jones Feed Mills experienced an extraordinary milestone – a milestone only few people and even fewer companies will experience. On January 2, 2020, Bert Pletsch, JFM Sales-Person Number 1, reached the 50 years of service milestone! Hired in 1970, Bert has had a career that includes the selling of almost anything a feed mill can sell. When asked how he feels about this incredible accomplishment, Bert says, “it’s been great!” Bert, who by no means is retiring, reflects on the many wonderful friends and relationships he has developed through time while working for two generations of Jones Feed Mills owners. Through time, the Pletsch name has become synonymous with Jones Feed Mills.



George Jones (left) with Bert Pletsch (~mid 1970's)

First and foremost, because of Bert’s tenure. However, through time JFM also saw Bert’s wife, Lou, take on the role of JFM receptionist (12 years) and later his sons, Tim and David who also worked at the mill through periods of their school years. Paul Pletsch, who manages Black Creek Livestock, is Bert’s nephew, and is also an institution at Jones, as seen through his 28 years of service to date. Bert feels fortunate to have his health and because of that will continue in his role of managing the JFM dealer network as well as much of our wholesale and international business. Please join all of us at Jones Feed Mills in congratulating Bert on 50 Years of Service!

George Robert Jones Production Plant - Now in the Testing Phase



Last month, and right on schedule, the switches were hit to fire up the new George Robert Jones Production Plant. Everything seems to be going smoothly so far, and though we will be in the testing phase for some time, we are excited to see the commodities going in and the feed coming out! Stay tuned for more updates on this history-making time at JFM.



The first load of feed being loaded out of the new mill 01/21/20

NOTICE: Beginning May 2, 2020, the JFM Linwood Office and warehouse will be closed on Saturdays. All customers are welcome to pick up feed at our Heidelberg mill location at 2755 Lobsinger Line, Heidelberg which has extended business hours (8:00 AM – 4:00 PM on Saturdays).

FUTURES

Jan 30, 2020

Live Cattle

(\$/CWT)



Apr	\$ 158.15
Jun	\$ 147.53
Aug	\$ 144.66
Oct	\$ 148.25

Dressed Hogs

(\$/CKG)



Apr	\$ 162.80
May	\$ 178.94
Jun	\$ 194.83
Jul	\$ 196.99

Canadian Dollar: \$1.32

Source: farms.com

On the Calendar!

Feb 4 - Ontario Soil and Crop Improvement Association
 AGM - Lamplighter Inn, London

Feb 12- JFM Dairy Producer Meeting*- Linwood Community Centre (see back page)

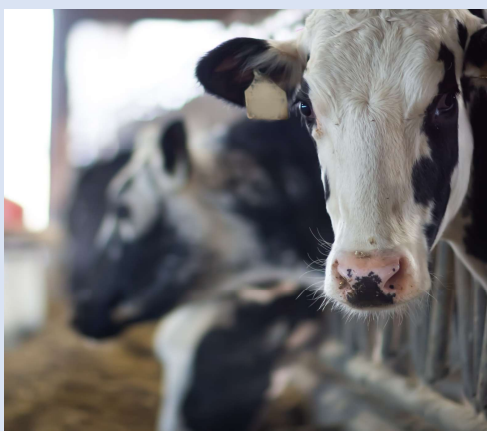
Feb 13-14 - Mental Health First Aid Training - Listowel Ag Hall, Listowel

Feb 19- Beef Farmers of Ontario AGM & Conference* - Delta Hotel, Toronto

Feb 19 - SWO Pork Conference*- Ridgeway Campus, Ridgeway

Feb 20 - SWO Dairy Symposium*- Woodstock Fairgrounds, Woodstock

*JFM Sponsored or Exhibiting Event



DAIRY PRODUCER MEETING

FEBRUARY 12, 2020

10:00 AM – 2:30 PM

LINWOOD COMMUNITY CENTRE

Dr. Tom Overton

Strategies for Healthy and Productive Transition Cows

Feeding & Managing for Milk Components

Tricia Dunn MSc.

Tips for a Successful Transition Period

Lunch Provided – Door Prizes

RSVP by Thursday Feb 6/20 to your JFM Dairy Sales Rep or 1-800-265-8735

Rides Available Upon Request

Meeting proudly sponsored by:



Annual Farm Safety Rally

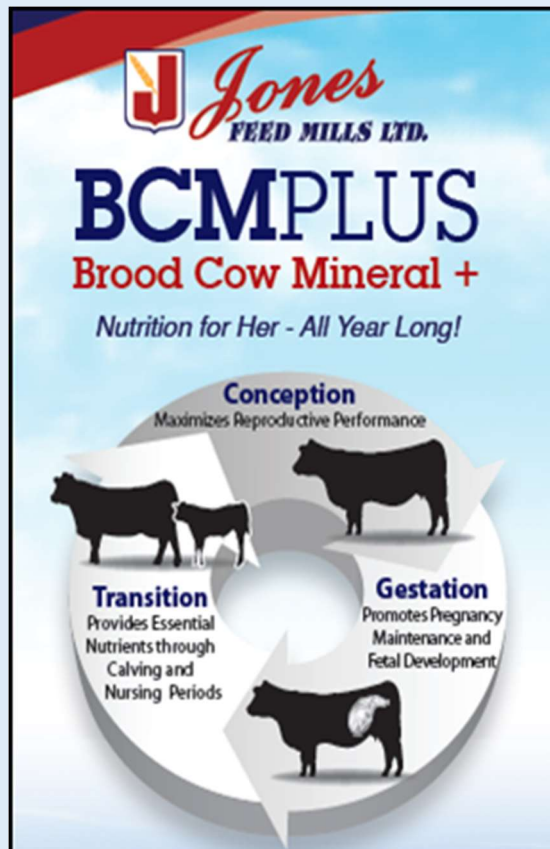
Canadian Agricultural Safety week is March 16-21. This year's theme is "Grow an Ag Safe Canada, Safe and Strong Farms"- Program is designed to challenge farm families to reflect on the safety measures where they work and live.

An Important Question on Beef Cow Mineral

Question: Which months should you feed your beef cows mineral?

Answer: All of them!

The Jones **BCM Plus** Beef Cow mineral is a specially formulated mineral to deliver on the needs of your beef cows throughout the year. Whether your cows are ready to calve, are nursing, being bred back or are carrying next year's investment, **BCM Plus** has you covered. Talk to Mike Geddes 519-502-8864 or a member of the JFM Beef Team to learn more!



Research Road Trip!

Come with us to tour the **Provimi Calf Research Centre** in Brookville, Ohio where all the research behind the **JFM Whole Start Program** is done! On this trip you will tour the Provimi calf research facility, visit Provimi North America's headquarters, and tour a large US dairy that uses this technology on their farm. If you are interested in attending talk to your JFM Dairy Sales Rep or Lisa Zielemann at 519-807-3870 (call/text).

Keep Caught Up!



The **JFM Beef and Dairy Winter Newsletters** are both now available. Ask your JFM Sales Rep for your copy and keep caught up on industry news, management tips and nutrition recommendations!

Notice for those receiving their newsletter via email – your newsletter could be received in your Spam or Junk Mail folder. To correct this, drag the message from the Junk folder to your Inbox and future newsletters should arrive without issue.

Buggy Road Safety Manual



Now Available!

JFM now has copies of the recently produced **Buggy Road Safety Manual** – produced in co-operation with the OPP, OMAFRA, Lancaster County Amish Safety Committee and several other rural safety groups. Perfect for buggy and car/truck drivers alike. Stop by any of the JFM mills for a copy or ask your sales rep for one.



www.jfm.ca | 1-800-265-8735

@Jones_Feed Jones Feed Mill Ltd